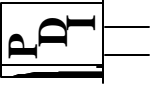
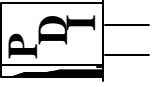


Precision Devices, Inc.



8840 N. Greenview Dr.
Middleton, WI 53562
Phone: 608-831-4445
1-800-274-XTAL
Fax: 608-831-3343



Visit our web site at www.pdixtal.com

Sales Information sales@pdixtal.com

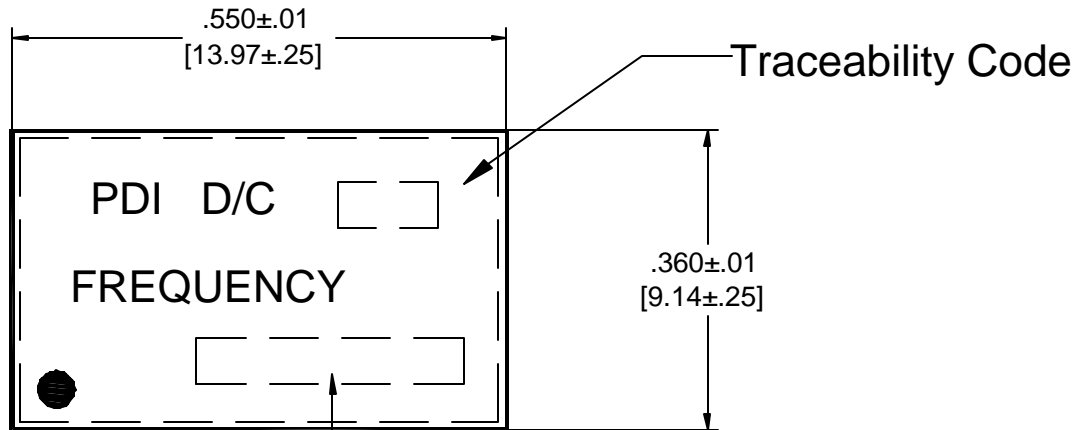
Electrical Specifications

- Center Frequency: 100.00000 MHz
- Supply Voltage: +3.3Vdc±5%
- Supply Current (No Load): 100.0mA Max.
Output Load: 50 Ohms to +1.3Vdc
- Duty Cycle: 60/40% Max. @50%Vcc
- Rise/Fall Time (20% to 80%): 1.0nSec Max.
- Start-Up Time: 10.0mSec Max.
- Slope: Positive
- Input Impedance: 10K Ohms
- Operating Temperature: 0°C to +70°C
Storage Temperature: -55°C to +105°C
- Modulation Freq. Range: 10.0KHz @100MHz
- Stability (Inclusive Calibration, Temp.,
volt., load, shock aging, vibration) ±20ppm
- Voltage Control Range: +1.65V Typ., 3.30V Max.
Settability=+1.65V±0.33V
- Pullability: ±50.0ppm Min., ±100ppm Typ.
- Linearity: ±10% Max.
- Voh: Vcc-1.02V Min., "1" Level
Vol: Vcc-1.65V Max., "0" Level
- Phase Noise: @1.0KHz Offset -80.0dBc/Hz Typ.
@10.0KHz Offset -100.0dBc/Hz Typ.
@100.0KHz Offset -120.0dBc/Hz Typ.

NOTE: Oscillator must have High Enable/Low Disable.

The information contained in this drawing is the sole property of Precision Devices Inc. Any reproduction in part or as a whole without the written permission of Precision Devices Inc. is prohibited.

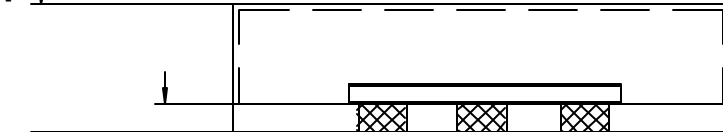
REV.	DATE	PAGE	DESCRIPTION	Auth.	ECN	FOR PRELIMINARY USE ONLY Specifications subject to change without notice.			
						TITLE	FKA		
						Voltage Controlled Crystal Oscillator		65016	
						PART NUMBER VC29C1000ESAXX			
						DATE	SCALE	ECN.	REV.
						1/9/09	N.T.S.	N/A	N/A
						SIZE	CAGE	Page 1 of 2	
						A	0S4G1		



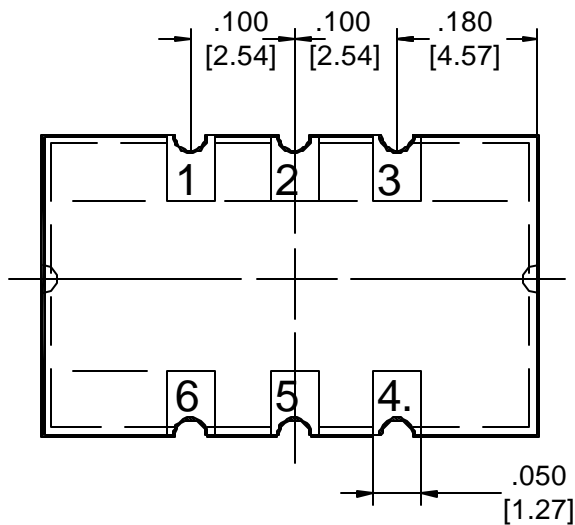
Last (7) Digits
of PDI P/N

PIN	Connection
1	Voltage Control
2	Enable/Disable
3	Ground
4	Output
5	Comp. Output
6	Vcc

.190 Max.
[4.83 Max.]



.026 Typ.
[0.66 Typ.]



Precision Devices Inc.

8840 N. Greenview Dr.
Middleton WI 53562
608-831-4445
1-800-274-XTAL



Manufacturer of Quartz Crystal Products

DECIMAL	DWG FILE	PART NUMBER	
XX=±.020 XXX=±.008	65016	VC29C10000ESAXX	
METRIC	SCALE	FREQUENCY	DRAWN BY
XX=±.50 XXX=±.20	N.T.S.	100.000000 MHz	J.Lawinger
ANGULAR	DRAWING TYPE	DATE	
XX=±2°	Voltage Controlled Crystal Oscillator	1/9/09	
	REV. LEVEL	ECN NO.	CAGE CODE
	N/A	N/A	0S4G1