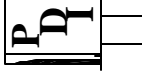


Precision Devices, Inc.

8840 N. Greenview Dr.
Middleton, WI 53562
Phone: 608-831-4445
1-800-274-XTAL
Fax: 608-831-3343



Visit our web site at www.pdixtal.com

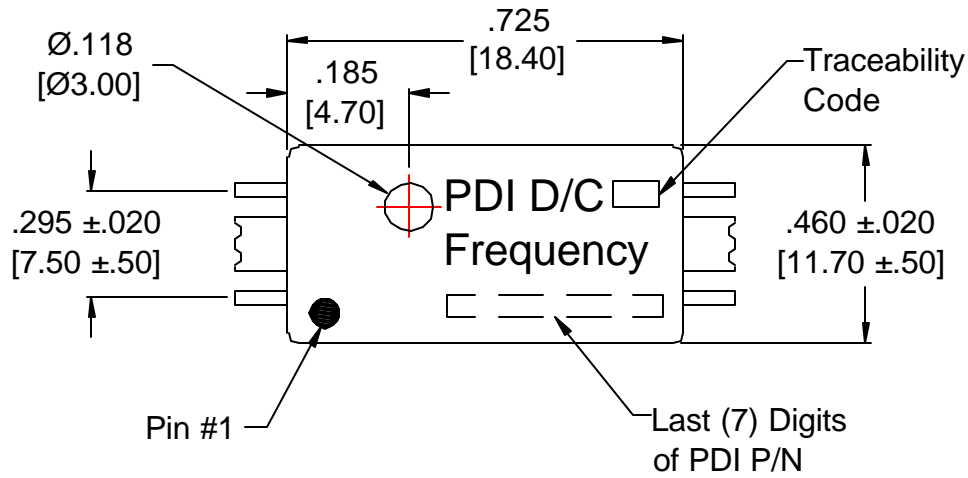
Sales Information sales@pdixtal.com

Electrical Specifications

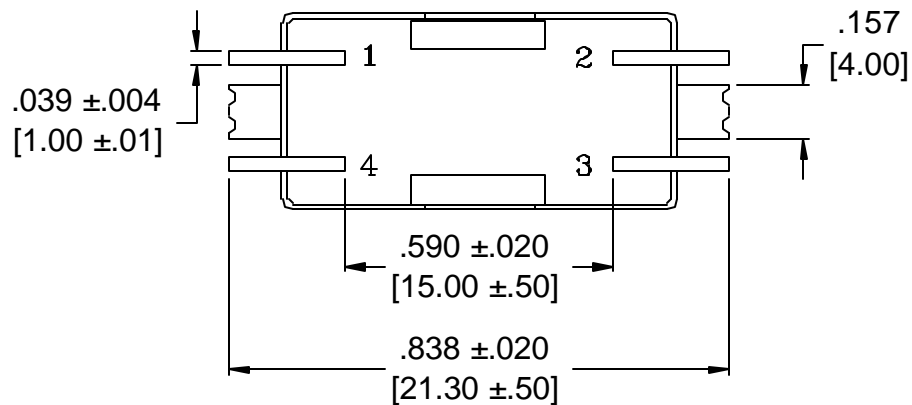
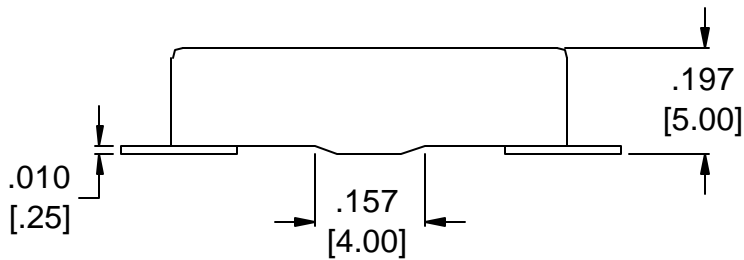
- Center Frequency (fo): 23.100000 MHz
- Input Voltage: V1 = +3.3Vdc ±0.17v maximum
- Supply Ripple & Noise: 50mV peak/peak sinewave @ any frequency between 100 Hz and 12 MHz
- Input Current: 3mA maximum
- Frequency: Frequency shall be set to within ±1ppm of desired frequency fo at +25°C at time of shipping.
- RF Output: Within 500 mS maximum after application of input voltage.
- Load VSWR: RF output must withstand continuous applications of loads of any VSWR including short and open circuit conditions.
- Output Waveform: Sinewave 0.7 volt peak to peak min. Output shall be AC coupled (DC open)
- Oscillator Load: 5pf ±10% maximum in parallel 10K Ohms +10% minimum
- Long Term Aging: Less than 5ppm/10 years maximum
- Temperature Stability: ±2.0ppm maximum when run over a temperature loop starting at +25°C, going to -45°C up to +85°C and back to -25°C with transition rates of 2°/minute
- Voltage Stability: ±0.2ppm maximum @+25°C for the input range
- Acceleration Sensitivity: 0.001ppm/G maximum
- Harmonics: The 2nd harmonics must be less than -15dBc minimum relative to carrier
- Spurious: -60dBc maximum, -50dBc maximum during vibration.
- Phase Noise:
 - @ 1Hz: -47dBc/Hz Maximum
 - @ 10Hz: -82dBc/Hz Maximum
 - @ 100Hz: -112dBc/Hz Maximum
 - @ 1kHz: -132dBc/Hz Maximum
 - @ 10kHz: -142dBc/Hz Maximum
 - @ 100kHz: -147dBc/Hz Maximum
- Response to Supply Ripple: With the specified power supply ripple, the total power of the spurious outputs at frequencies removed from fo by 100Hz to 12Mhz must be no greater than -57dBc maximum
- Temperature Range: Operating; -45°C to +85°C, Storage; -65°C to +85°C
- Cold Temperature Start-Up: After and extended cold soak at -55°C with no power applied, the part shall start-up and run with application of power.

Note: Additional requirements per customer drawing 277-0825-020

REV.	DATE	PAGE	DESCRIPTION	ECN	Originator	Date	Engineering	Date
					J.L.	6/15/09	B.A.	6/15/09
					TITLE Temperature Controlled Crystal Oscillator		FKA 17202	
					PART NUMBER	TC2623100XWLDXX		
					DATE	SCALE	ECN.	REV.
					6/15/09	N.T.S.	N/A	A
					SIZE	CAGE		
					A	0S4G1	Page 1 of 2	



Pin	Connection
1	No Connect
2	Ground
3	Output
4	Supply



Precision Devices Inc.

8840 N. Greenview Dr.
Middleton WI 53562
608-831-4445
1-800-274-XTAL



Manufacturer of Quartz Crystal Products

DECIMAL XX= $\pm.020$ XXX= $\pm.008$	DWG FILE 17202	PART NUMBER TC2623100XWLDXX	
METRIC XX= $\pm.50$ XXX= $\pm.20$	SCALE N.T.S.	FREQUENCY 23.100000 MHz	DRAWN BY J.Lawinger
ANGULAR XX= $\pm 2^\circ$	REV. LEVEL A	ECN NO. N/A	DATE 6/15/09
		CAGE CODE 0S4G1	Page 2 of 2