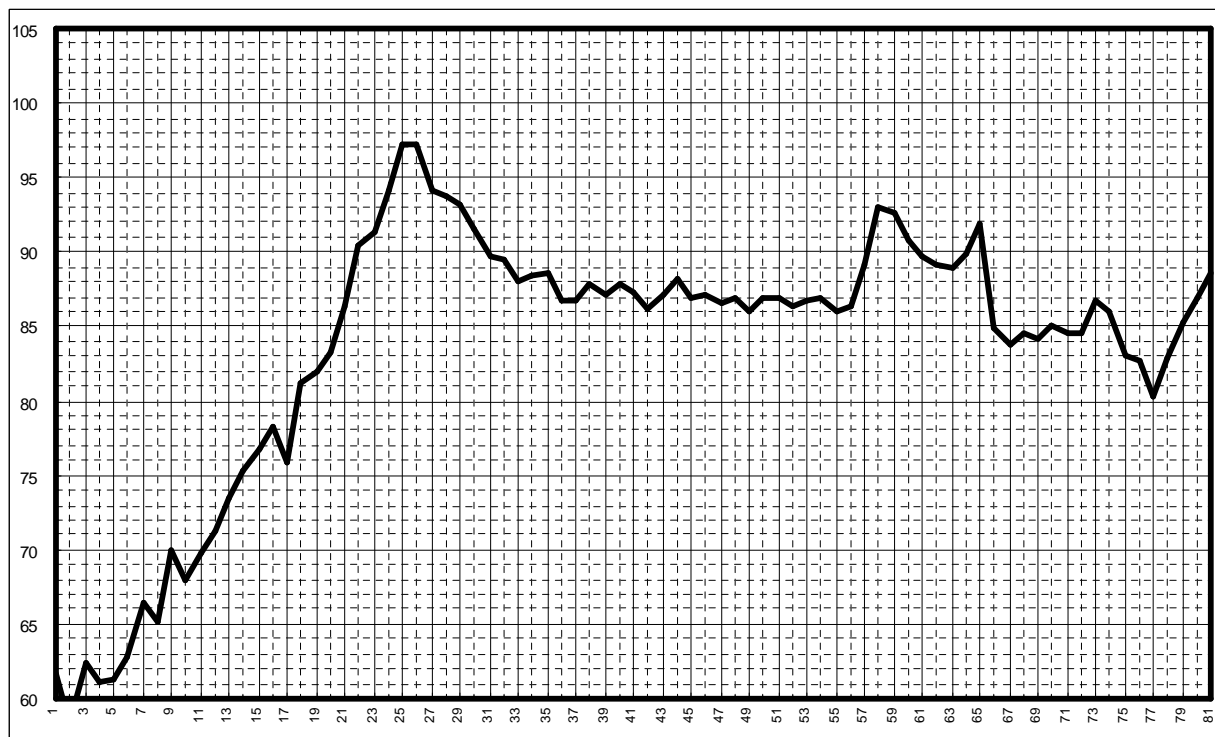
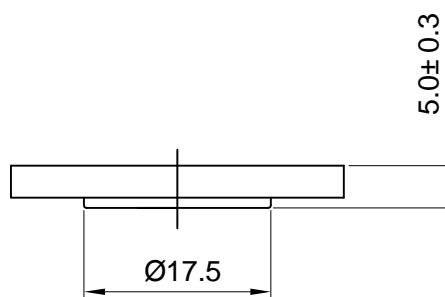
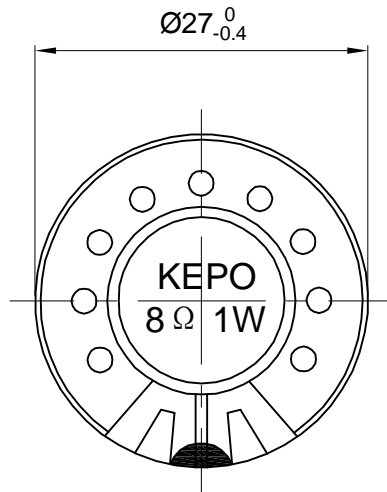


Speaker Specification

Customer's Model No.				Customer	青岛海信	
Kepo Model No.		KPSP2750PN-08/1.0B		Size	Φ27mm	No. J22410
No.	Item	Specification		Test Condition		
1	Impedance	8Ω ± 15%		at 1000Hz		
2	Resonant Fr. (f _o)	800Hz± 20%				
3	Frequency Range	F0-7.0KHz				
4	Rated Power	1.0W				
5	Max Power	1.2W				
6	S.P.L.	91± 3dB		0.1m/0.1w AVG. at 0.8k,1.0k,1.2k,1.5kHz		
7	Distortion	Max 5%		at rated power 1.0kHz		
8	Sweep Test	must be normal		at sine wave 2.83V		
9	Load Test	after test meet item 8		rated noise power, 24 Hrs.		
10	Heat Test	after test meet item 8		50± 2℃ 5Hrs.		
11	Cold Test	after test meet item 8		-20± 2℃ 5Hrs.		
12	Humidity Test	after test meet item 8		40± 2℃,90/95%R.H. 5Hrs.		
13	Weight					
14	Polarity Test	When supplied plus D.C. voltage to (+) terminal, the cone must move to forward.				
15	Note					



Dimensions:



FIRST ANGLE PROJECTION

UNIT : mm
Tolerance : ±0.2