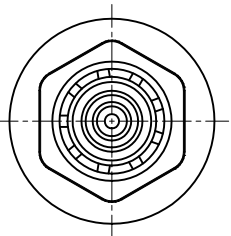
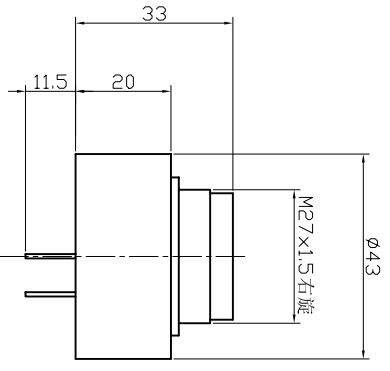
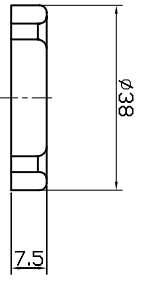
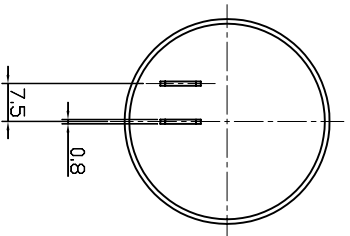


# SPECIFICATION

- |                                   |                    |
|-----------------------------------|--------------------|
| 1. Rated Voltage .....            | 12VAC              |
| 2. Operating Voltage .....        | 8~15VAC            |
| 3. Max. Rated Current .....       | 20mA at 12VAC      |
| 4. Resonant Frequency .....       | 2.9±0.5KHz         |
| 5. Min. Sound Pressure Level..... | 80dB at 12VAC/60cm |
| 6. Tone Nature .....              | Slow Pulse         |
| 7. Shell Material/Color .....     | ABS/Black          |
| 8. Operating Temperature .....    | -20~+60℃           |
| 9. Store Temperature .....        | -30~+70℃           |
| 10. Weight .....                  | 40g                |



No.	DESCRIPTION	APPROVED	DATE	<b>KEPO</b> NINGBO KEPP IMPROVING ELECTRONIC CO.,LTD <a href="http://www.chinaacoustic.com">http://www.chinaacoustic.com</a>	
TOLERANCES: UNLESS NOTED OTHERWISE	APPROVALS	DATE			
mm ± .1	DRAWN				
.1mm ± .01 90° ANGLES ±.1° FIRST ANGLE PROJECTION	CHECKED				
	APPROVED		03.09.01	UNIT: mm	DWG NO: KP3.840.117.02
				SCALE: NOT TO SCALE	SHEET: VER 1.0