

Series	Model	Diameter (Ømm)	Height (mm)	Rated Voltage (VDC)	Min. Sound Output (dBA)	Frequency (±100Hz)	Terminal	Page No.
DB-E1268	126S1110A	23.0	MAX.20	110VAC	75 AT 10CM	—	PT	78
DB-E1268	126S1230A	23.0	MAX.20	230VAC	78 AT 10CM	—	PT	78
DB-E1668	166S1230	24.3	21.0	230VAC	83 AT 10CM	—	PT	79
DB-E1048	104S1060	26.4	17.6	6.0	95 AT 10CM	400	L	78
DB-E1048	104S1120	26.4	17.6	12.0	95 AT 10CM	400	L	78
DB-E1048	104S1240	26.4	17.6	24.0	95 AT 10CM	400	L	78
DB-E1598	159S1120	97.0	54.0	12.0	105 AT 2M	320+/-35	PT	78
DB-E688	68S1015	17.0 X 22.5	14.0	1.5	70 AT 20cm	400	P	77
DB-E688	68S1030	17.0 X 22.5	14.0	3.0	70 AT 20cm	400	P	77
DB-E688	68S1060	17.0 X 22.5	14.0	6.0	75 AT 20cm	400	P	77
DB-E688	68S1090	17.0 X 22.5	14.0	9.0	75 AT 20cm	400	P	77
DB-E688	68S1120	17.0 X 22.5	14.0	12.0	75 AT 20cm	400	P	77
DB-E688	68S1240	17.0 X 22.5	14.0	24.0	75 AT 20cm	400	P	77
DB-E668	66S1015	17.0 X 23.0	13.5	1.5	70 AT 20cm	400	P	76
DB-E668	66S1030	17.0 X 23.0	13.5	3.0	70 AT 20cm	400	P	76
DB-E668	66S1060	17.0 X 23.0	13.5	6.0	75 AT 20cm	400	P	76
DB-E668	66S1090	17.0 X 23.0	13.5	9.0	75 AT 20cm	400	P	76
DB-E668	66S1120	17.0 X 23.0	13.5	12.0	75 AT 20cm	400	P	76
DB-E668	66S1240	17.0 X 23.0	13.5	24.0	75 AT 20cm	400	P	76
DB-E208	20S1015	17.0 X 23.0	15.5	1.5	70 AT 20cm	400	L	76
DB-E638	63S1015	17.0 X 23.0	15.5	1.5	70 AT 20cm	400	L	76
DB-E208	20S1030	17.0 X 23.0	15.5	3.0	70 AT 20cm	400	L	76
DB-E638	63S1030	17.0 X 23.0	15.5	3.0	70 AT 20cm	400	L	76
DB-E208	20S1060	17.0 X 23.0	15.5	6.0	75 AT 20cm	400	L	76
DB-E638	63S1060	17.0 X 23.0	15.5	6.0	75 AT 20cm	400	L	76
DB-E208	20S1090	17.0 X 23.0	15.5	9.0	75 AT 20cm	400	L	76
DB-E638	63S1090	17.0 X 23.0	15.5	9.0	75 AT 20cm	400	L	76
DB-E208	20S1120	17.0 X 23.0	15.5	12.0	75 AT 20cm	400	L	76
DB-E638	63S1120	17.0 X 23.0	15.5	12.0	75 AT 20cm	400	L	76
DB-E208	20S1240	17.0 X 23.0	15.5	24.0	75 AT 20cm	400	L	76
DB-E638	63S1240	17.0 X 23.0	15.5	24.0	75 AT 20cm	400	L	76
DB-E728	72S1060	26.0 X 26.0	19.5	6.0	95 AT 10CM	400	PT	77
DB-E728	72S1120	26.0 X 26.0	19.5	12.0	95 AT 10CM	400	PT	77
DB-E728	72S1240	26.0 X 26.0	19.5	24.0	95 AT 10CM	400	PT	77
DB-E348	34S1060	26.0 X 26.0	19.7	6.0	95 AT 10CM	400	P	77
DB-E348	34S1120	26.0 X 26.0	19.7	12.0	95 AT 10CM	400	P	77
DB-E348	34S1240	26.0 X 26.0	19.7	24.0	95 AT 10CM	400	P	77

\* L - Leadwire, P - PIN, PT - Plate

**DB-E208**



COLOUR	HOUSING	TERMINAL
BLACK	ABS	LEADWIRE

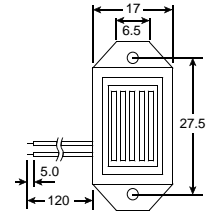
### ELECTRICAL SPECIFICATIONS

Model No.	20S1015	20S1030	20S1060	20S1090	20S1120	20S1240
Operating Voltage (VDC)	1 - 3	2 - 4	4 - 8	6 - 12	9 - 15	15 - 27
Rated Voltage (VDC)	1.5	3	6	9	12	24
*Max. Rated Current (mA.)	20	25	25	25	25	30
*Min Sound Output (dBA/20cm)	70	70	75	75	75	75
*Fundamental Frequency (Hz.)	400±100	400±100	400±100	400±100	400±100	400±100
Tone Nature	single	single	single	single	single	single
Operating Temperature (°C)	-10 ~ +60	-10 ~ +60	-10 ~ +60	-10 ~ +60	-10 ~ +60	-10 ~ +60
Weight (gm.)	10	10	10	10	10	10

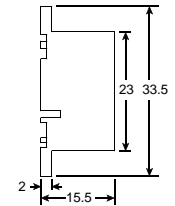
\* Value applying at rated voltage

### DIMENSION

Top View



Side View



all dimensions are in mm

**DB-E638**



COLOUR	HOUSING	TERMINAL
BLACK	ABS	LEADWIRE

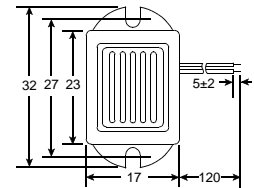
### ELECTRICAL SPECIFICATIONS

Model No.	63S1015	63S1030	63S1060	63S1090	63S1120	63S1240
Operating Voltage (VDC)	1 - 3	2 - 4	4 - 8	6 - 12	9 - 15	15 - 27
Rated Voltage (VDC)	1.5	3	6	9	12	24
*Max. Rated Current (mA.)	20	25	25	25	25	30
*Min Sound Output (dBA/20cm)	70	70	75	75	75	75
*Fundamental Frequency (Hz.)	400±100	400±100	400±100	400±100	400±100	400±100
Tone Nature	single	single	single	single	single	single
Operating Temperature (°C)	-10 ~ +60	-10 ~ +60	-10 ~ +60	-10 ~ +60	-10 ~ +60	-10 ~ +60
Weight (gm.)	10	10	10	10	10	10

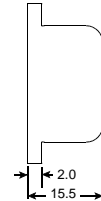
\* Value applying at rated voltage

### DIMENSION

Top View



Side View



all dimensions are in mm

**DB-E668**



COLOUR	HOUSING	TERMINAL
BLACK	ABS	PIN

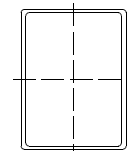
### ELECTRICAL SPECIFICATIONS

Model No.	66S1015	66S1030	66S1060	66S1090	66S1120	66S1240
Operating Voltage (VDC)	1 - 3	2 - 4	4 - 8	6 - 12	9 - 15	15 - 27
Rated Voltage (VDC)	1.5	3	6	9	12	24
*Max. Rated Current (mA.)	20	25	25	25	25	30
*Min Sound Output (dBA/20cm)	70	70	75	75	75	75
*Fundamental Frequency (Hz.)	400±100	400±100	400±100	400±100	400±100	400±100
Tone Nature	single	single	single	single	single	single
Operating Temperature (°C)	-10 ~ +60	-10 ~ +60	-10 ~ +60	-10 ~ +60	-10 ~ +60	-10 ~ +60
Weight (gm.)	10	10	10	10	10	10

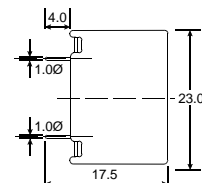
\* Value applying at rated voltage

### DIMENSION

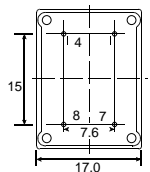
Top View



Side View



Bottom View



all dimensions are in mm

**DB-E688**



COLOUR	HOUSING	TERMINAL
BLACK	ABS	PIN

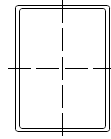
### ELECTRICAL SPECIFICATIONS

Model No.	68S1015	68S1030	68S1060	68S1090	68S1120	68S1240
Operating Voltage (VDC)	1 ~ 3	2 ~ 4	4 ~ 8	6 ~ 12	9 ~ 15	15 ~ 27
Rated Voltage (VDC)	1.5	3	6	9	12	24
* Max. Rated Current (mA.)	20	25	25	25	25	30
* Min Sound Output (dBA/20cm)	70	70	75	75	75	75
* Fundamental Frequency (Hz.)	400±100	400±100	400±100	400±100	400±100	400±100
Tone Nature	single	single	single	single	single	single
Operating Temperature (°C)	-10 ~ +60	-10 ~ +60	-10 ~ +60	-10 ~ +60	-10 ~ +60	-10 ~ +60
Weight (gm.)	10	10	10	10	10	10

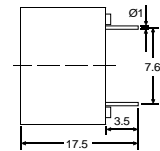
\* Value applying at rated voltage

### DIMENSION

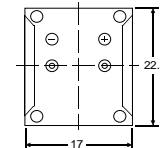
Top View



Side View



Bottom View



all dimensions are in mm

**DB-E348**



COLOUR	HOUSING	TERMINAL
IVORY	ABS	PIN

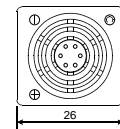
### ELECTRICAL SPECIFICATIONS

Model No.	34S1060	34S1120	34S1240
Operating Voltage (VDC)	4 ~ 8	7 ~ 16	20 ~ 28
Rated Voltage (VDC)	6	12	24
* Max. Rated Current (mA.)	35	50	50
* Min Sound Output (dBA/10cm)	95	95	95
* Fundamental Frequency (Hz.)	400 ± 100	400 ± 100	400 ± 100
Tone Nature	single	single	single
Operating Temperature (°C)	-20 ~ +60	-20 ~ +60	-20 ~ +60
Weight (gm.)	17	17	17

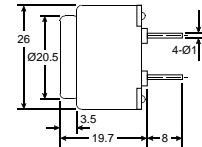
\* Value applying at rated voltage

### DIMENSION

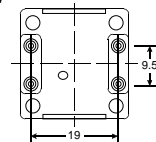
Top View



Side View



Bottom View



all dimensions are in mm

**DB-E728**



COLOUR	HOUSING	TERMINAL
IVORY	ABS	PLATE

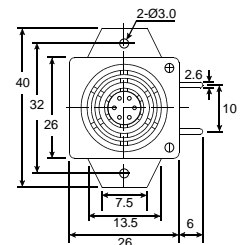
### ELECTRICAL SPECIFICATIONS

Model No.	72S1060	72S1120	72S1240
Operating Voltage (VDC)	4 ~ 8	8 ~ 16	24 ~ 28
Rated Voltage (VDC)	6	12	24
* Max. Rated Current (mA.)	65	55	55
* Min Sound Output (dBA/10cm)	95	95	95
* Fundamental Frequency (Hz.)	400±100	400±100	400±100
Tone Nature	single	single	single
Operating Temperature (°C)	-20 ~ +60	-20 ~ +60	-20 ~ +60
Weight (gm.)	17	17	17

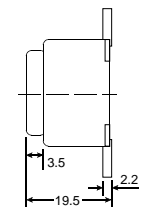
\* Value applying at rated voltage

### DIMENSION

Top View

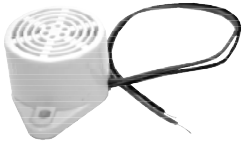


Side View



all dimensions are in mm

**DB-E1048**



COLOUR	HOUSING	TERMINAL
WHITE	ABS	LEADWIRE

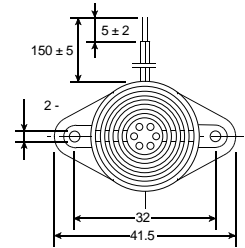
### ELECTRICAL SPECIFICATIONS

Model No.	104S1060	104S1120	104S1240
Operating Voltage (VDC)	4 - 8	7 - 16	20 - 28
Rated Voltage (VDC)	6	12	24
* Max. Rated Current (mA.)	33	23	21
* Min Sound Output (dBA/10cm)	95	95	95
* Fundamental Frequency (Hz.)	400±100	400±100	400±100
Tone Nature	single	single	single
Operating Temperature (°C)	-20 ~ +60	-20 ~ +60	-20 ~ +60
Weight (gm.)	17	17	17

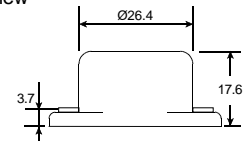
\* Value applying at rated voltage

### DIMENSION

Top View

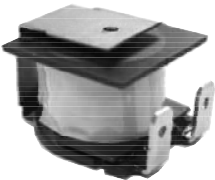


Side View



all dimensions are in mm

**DB-E1268**



COLOUR	HOUSING	TERMINAL
BLACK	ABS	PLATE

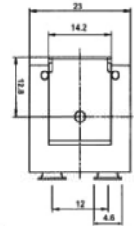
### ELECTRICAL SPECIFICATIONS

Model No.	126S1110A-TA	126S1230A-TA
Operating Voltage (VAC)	110	230
Rated Voltage (VAC)	70 - 150	160-260
* Max. Rated Current (mA.)	25	30
* Min Sound Output (dBA/10cm)	75	78
Tone Nature	single	single
Operating Temperature (°C)	-25 ~ +75	-25 ~ +75
Weight (gm.)	20	20

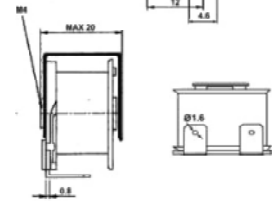
\* Value applying at rated voltage

### DIMENSION

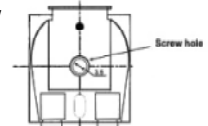
Top View



Side View

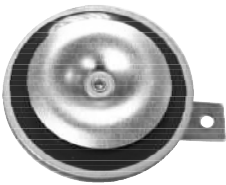


Bottom View



all dimensions are in mm

**DB-E1598**



COLOUR	HOUSING	TERMINAL
GOLDEN	METAL	PLATE

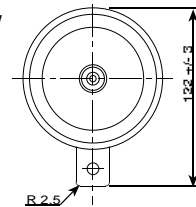
### ELECTRICAL SPECIFICATIONS

Model No.	159S1120
Operating Voltage (VDC)	11 - 13
Rated Voltage (VDC)	12
* Max. Rated Current (mA.)	3.5
* Min Sound Output (dBA/10cm)	105
* Fundamental Frequency (Hz.)	320±35
Tone Nature	single
Operating Temperature (°C)	-40 ~ +65
Weight (gm.)	315

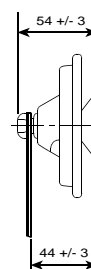
\* Value applying at rated voltage

### DIMENSION

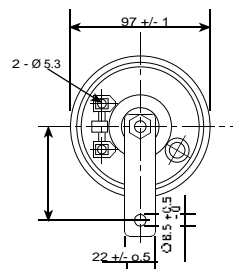
Top View



Side View



Bottom View



all dimensions are in mm

**DB-E1668**



COLOUR	HOUSING	TERMINAL
BLACK	PBT	PLATE

### ELECTRICAL SPECIFICATIONS

Model No. 166S1230

Operating Voltage (VDC) 230

Rated Voltage (VDC) 160-260

\* Max. Rated Current (mA.) 30

\* Min Sound Output (dBA/10cm) 83

\* Fundamental Frequency (Hz.) -

Tone Nature single

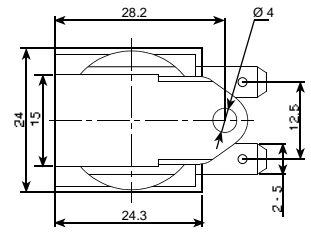
Operating Temperature (°C) -20 ~ +60

Weight (gm.) 34

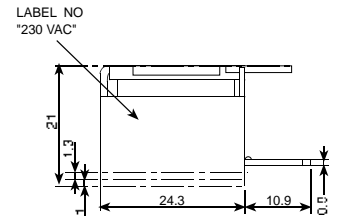
\* Value applying at rated voltage

### DIMENSION

Top View



Side View



all dimensions are in mm

The information contained herein is believed to be correct, but no guarantee or warranty, express or implied, with respect to accuracy, completeness or results is extended and no liability is assumed. Laube Technology reserves the right to make changes in any specification, data or material contained herein.