

Series	Model	Diameter (Ømm)	Height (mm)	Rated Voltage	Min. Sound Output (dBA)	Frequency (± 500Hz)	Terminal	Page No.
DB-E758	75PZ23350	22.5	11.0	12.0	80 AT 30cm	3500	P	70
DB-E418	41PZ23500Q	23.0	5.0	6.0	75 AT 10cm	5000 +/- 1000	L	70
DB-E928	92PZ24360	24.0	11.0	12.0	95 AT 10cm	3600	P	71
DB-E768	76PZ5370	24.7	7.0	12.0	88 AT 10cm	3700	P	70
DB-E768	76PZ25680	24.7	7.0	12.0	90 AT 10cm	6800	P	71
DB-E358	35PZ28300	28.5	13.5	12.0	75 AT 100cm	3000	P	70
DB-E1028	102PZ30340	29.7	16.5	9.0	100 AT 30cm	3400	L	72
DB-E1248	124PZ30360	30.0	11.5	12.0	88 AT 10cm	3600	P	72
DB-E878	87PZ30270	30.0	12.0	12.0	75 AT 100cm	2700	P	71
DB-E1498	149PZ33200	33.0	7.5	12.0	75 AT 30cm	2000	PT	73
DB-E1458	145PZ33260	33.5	8.0	12.0	82 AT 30cm	2600	P	73
DB-E168	16PZ3200	39.0	20.0	9.0	95 AT 30cm	3400	P	69
DB-E1488	148PZ42280	41.8	16.0	12.0	85 AT 30cm	2800	L	73
DB-E1258	125PZ25320	24.0 X 25.0	10.0	12.0	90 AT 10cm	3200	P	72

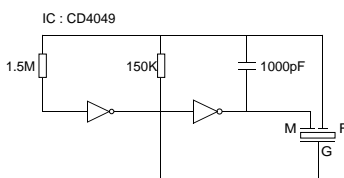
\* L - Leadwire, P - PIN, PT - Plate

## DB-E168



COLOUR	HOUSING	TERMINAL
BLACK	NORYL	PIN

#### REFERENCE CIRCUIT

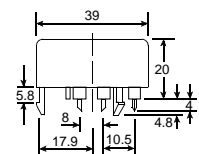
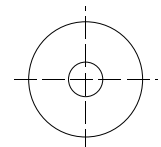


#### ELECTRICAL SPECIFICATIONS

Model No.	16PZ3200
Operating Voltage (VDC)	4.5 ~ 15
Rated Voltage (VDC)	9
Max. Rated Current (mA.)	15
Min Sound Output (dBA/30cm)	95
Frequency (Hz.)	3400±500
Operating Temperature (°C)	-20 ~ +70
Weight (gm.)	11

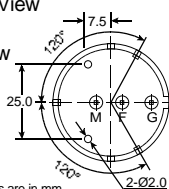
#### DIMENSION

Top View



Bottom View

Side View



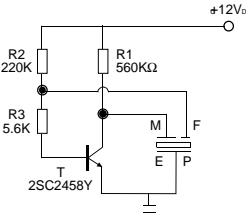
all dimensions are in mm

**DB-E358**



COLOUR	HOUSING	TERMINAL
GREY	PBT	PIN

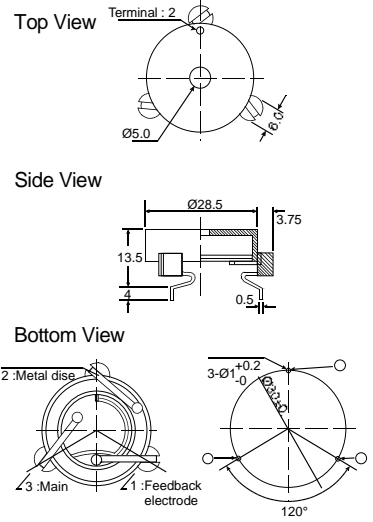
**REFERENCE CIRCUIT**



**ELECTRICAL SPECIFICATIONS**

Model No.	35PZ28300
Operating Voltage (VDC)	3 - 24
Rated Voltage (VDC)	12
Max Rated Current (mA.)	30
Min Sound Output (dBA/100cm)	75
Frequency (Hz.)	3000±500
Operating Temperature (°C)	-20 ~ +70
Weight (gm.)	3

**DIMENSION**



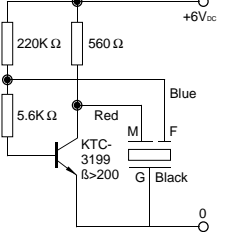
all dimensions are in mm

**DB-E418**



COLOUR	HOUSING	TERMINAL
BLACK	ABS	LEADWIRE

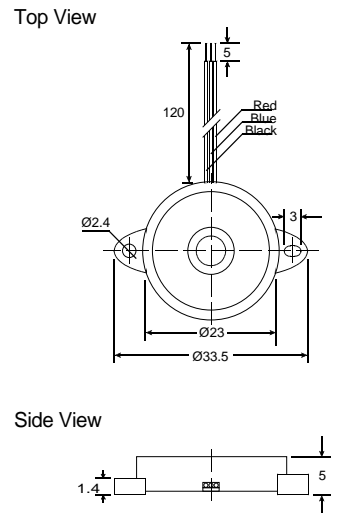
**REFERENCE CIRCUIT**



**ELECTRICAL SPECIFICATIONS**

Model No.	41PZ23500Q
Operating Voltage (VDC)	3 - 16
Rated Voltage (VDC)	6
Max. Rated Current (mA.)	5
Min Sound Output (dBA/10cm)	75
Frequency (Hz.)	5000±1000
Operating Temperature (°C)	-20 ~ +60
Weight (gm.)	2

**DIMENSION**



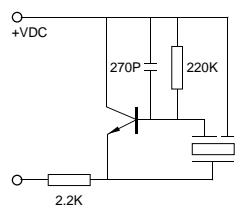
all dimensions are in mm

**DB-E758**



COLOUR	HOUSING	TERMINAL
GREY	PBT	PIN

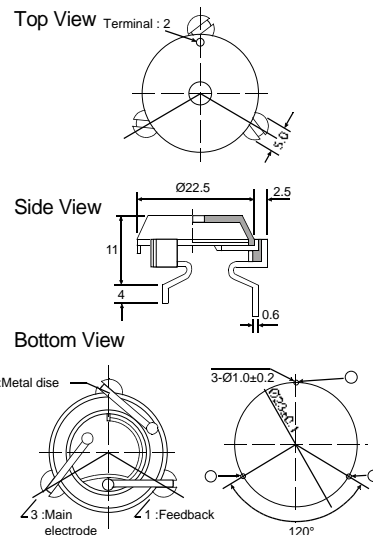
**REFERENCE CIRCUIT**



**ELECTRICAL SPECIFICATIONS**

Model No.	75PZ23350
Operating Voltage (VDC)	3 - 24
Rated Voltage (VDC)	12
Max Rated Current (mA.)	15
Min Sound Output (dBA/100cm)	80
Frequency (Hz.)	3000±500
Operating Temperature (°C)	-20 ~ +70
Weight (gm.)	1.7

**DIMENSION**



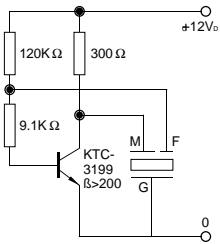
all dimensions are in mm

### DB-E768



COLOUR	HOUSING	TERMINAL
BLUE	NYLON / PBT	PIN

#### REFERENCE CIRCUIT

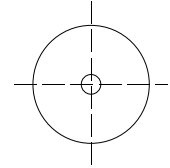


#### ELECTRICAL SPECIFICATIONS

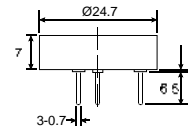
Model No.	76PZ25370	76PZ25680
Operating Voltage (VDC)	3 ~ 24	3 ~ 24
Rated Voltage (VDC)	12	12
Max. Rated Current (mA)	20	20
Min Sound Output (dBA/10cm)	88	90
Frequency (Hz.)	3700±500	6800±500
Operating Temperature (°C)	-20 ~ +70	-20 ~ +70
Weight (gm.)	2.5	2.5

#### DIMENSION

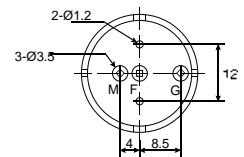
Top View



Side View



Bottom View



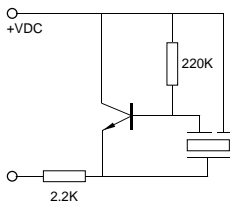
all dimensions are in mm

### DB-E878



COLOUR	HOUSING	TERMINAL
BLACK	PBT	PIN

#### REFERENCE CIRCUIT

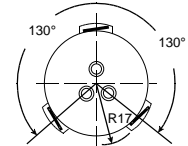


#### ELECTRICAL SPECIFICATIONS

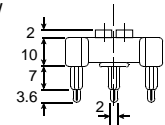
Model No.	87PZ30270
Operating Voltage (VDC)	1.5 ~ 24
Rated Voltage (VDC)	12
Min Sound Output (dBA/100cm)	75
Frequency (Hz.)	2700±500
Operating Temperature (°C)	0 ~ +120
Weight (gm.)	5

#### DIMENSION

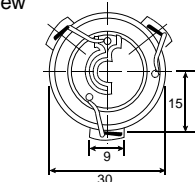
Top View



Side View



Bottom View



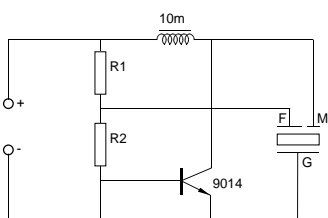
all dimensions are in mm

### DB-E928



COLOUR	HOUSING	TERMINAL
BLACK	PBT	PIN

#### REFERENCE CIRCUIT

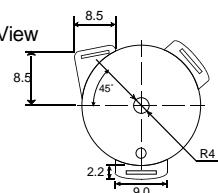


#### ELECTRICAL SPECIFICATIONS

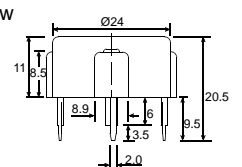
Model No.	92PZ24360
Operating Voltage (VDC)	3 ~ 28
Rated Voltage (VDC)	12
Max. Rated Current (mA)	10
Min Sound Output (dBA/10cm)	95
Frequency (Hz.)	3600±500
Operating Temperature (°C)	-20 ~ +60
Weight (gm.)	4.5

#### DIMENSION

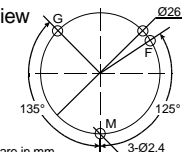
Top View



Side View



Bottom View



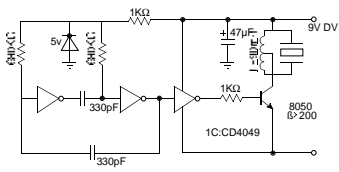
all dimensions are in mm

**DB-E1028**



COLOUR	HOUSING	TERMINAL
IVORY	ABS	LEADWIRE

**REFERENCE CIRCUIT**

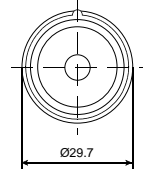


**ELECTRICAL SPECIFICATIONS**

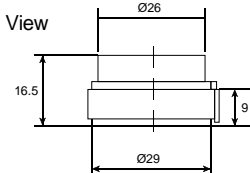
Model No.	102PZ30340	
Operating Voltage (VDC)	3 ~ 28	
Rated Voltage (VDC)	9	
Max. Rated Current (mA.)	180	
Min Sound Output (dBA/30cm)	100	
Frequency (Hz.)	3400±500	
Operating Temperature (°C)	-20 ~ +60	
Weight (gm.)	8	

**DIMENSION**

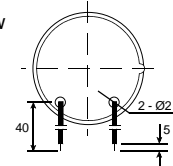
Top View



Side View



Bottom View



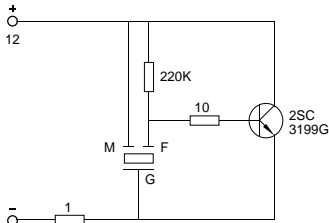
all dimensions are in mm

**DB-E1248**



COLOUR	HOUSING	TERMINAL
BLACK	NORYL SE1	PIN

**REFERENCE CIRCUIT**

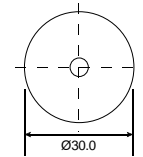


**ELECTRICAL SPECIFICATIONS**

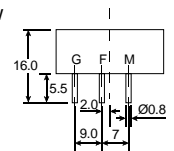
Model No.	124PZ30360	
Operating Voltage (VDC)	3 ~ 20	
Rated Voltage (VDC)	12	
Max. Rated Current (mA.)	10	
Min Sound Output (dBA/10cm)	88	
Frequency (Hz.)	3600±500	
Operating Temperature (°C)	-30 ~ +70	
Weight (gm.)	5	

**DIMENSION**

Top View

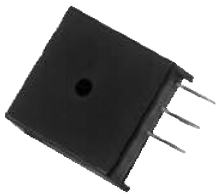


Side View



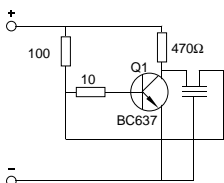
all dimensions are in mm

**DB-E1258**



COLOUR	HOUSING	TERMINAL
BLACK	NORYL SE1	PIN

**REFERENCE CIRCUIT**

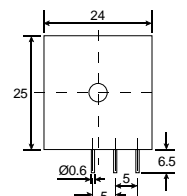


**ELECTRICAL SPECIFICATIONS**

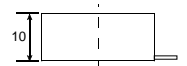
Model No.	125PZ25320	
Operating Voltage (VDC)	3 ~ 20	
Rated Voltage (VDC)	12	
Max. Rated Current (mA.)	20	
Min Sound Output (dBA/10cm)	90	
Frequency (Hz.)	3200±500	
Operating Temperature (°C)	-20 ~ +110	
Weight (gm.)	3.5	

**DIMENSION**

Top View

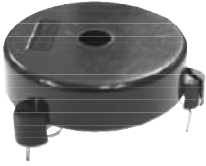


Side View



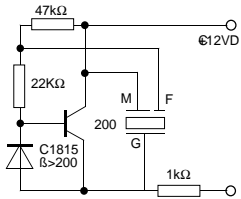
all dimensions are in mm

### DB-E1458



COLOUR	HOUSING	TERMINAL
BLACK	PBT	PIN

#### REFERENCE CIRCUIT

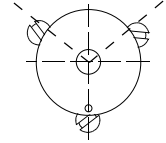


#### ELECTRICAL SPECIFICATIONS

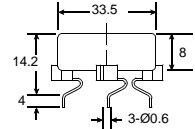
Model No.	145PZ33260	
Operating Voltage (VDC)	6 - 30	
Rated Voltage (VDC)	12	
Max. Rated Current (mA)	8	
Min Sound Output (dBA/30cm)	82	
Frequency (Hz)	2600±500	
Operating Temperature (°C)	-20 ~ +70	
Weight (gm.)	5	

#### DIMENSION

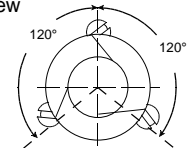
Top View



Side View



Bottom View



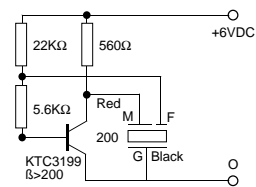
all dimensions are in mm

### DB-E1488



COLOUR	HOUSING	TERMINAL
BLACK	ABS	LEADWIRE

#### REFERENCE CIRCUIT

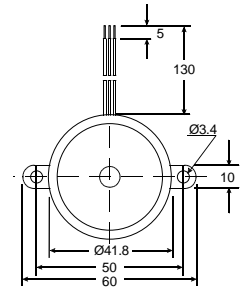


#### ELECTRICAL SPECIFICATIONS

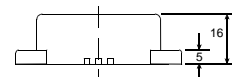
Model No.	148PZ42280	
Operating Voltage (VDC)	3 - 24	
Rated Voltage (VDC)	12	
Max. Rated Current (mA)	8	
Min Sound Output (dBA/30cm)	85	
Frequency (Hz)	2800±500	
Operating Temperature (°C)	-20 ~ +60	
Weight (gm.)	10	

#### DIMENSION

Top View



Side View



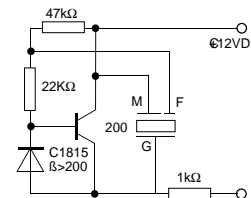
all dimensions are in mm

### DB-E1498



COLOUR	HOUSING	TERMINAL
BLACK	PPO	PLATE

#### REFERENCE CIRCUIT

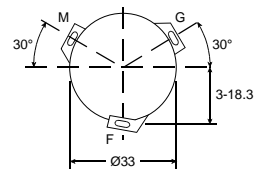


#### ELECTRICAL SPECIFICATIONS

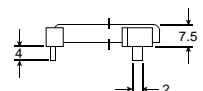
Model No.	149PZ33200	
Operating Voltage (VDC)	3 - 24	
Rated Voltage (VDC)	12	
Max. Rated Current (mA)	8	
Min Sound Output (dBA/30cm)	75	
Frequency (Hz)	2000±500	
Operating Temperature (°C)	-20 ~ +80	
Weight (gm.)	5	

#### DIMENSION

Top View



Side View



all dimensions are in mm