



RoHS Compliant

Features

- Crystal unit for Consumer Products
- Small and low profile (11.8×5.5×1.8mm)
- Ceramic package
- Product with lead free terminations
- Reflow compatible

Applications

- Digital Electronics
- Consumer Products
- Car audio and accessories

How to Order

CX1255GB 04000

① ② ③ ④ ⑤ ⑥ ⑦

- ① Series ② Frequency
- ③ Load Capacitance ④ Frequency Stability
- | | | | | | |
|-----------|-------|------|----------|-------------------------|------|
| H0 | 12 pF | Std. | P | $\pm 50 \times 10^{-6}$ | Std. |
|-----------|-------|------|----------|-------------------------|------|
- ⑤ Operating Temp. Range ⑥ Frequency Temp. Stability
- | | | | | | |
|-----------|--------------|--|-------------------------|--|------|
| ES | -10 to +70°C | | $\pm 50 \times 10^{-6}$ | | Std. |
|-----------|--------------|--|-------------------------|--|------|
- ⑦ Individual Specification

Specifications

Item	Symbol	Specification	Units	Remarks
Frequency Range	f_{nom}	3500 to 28999	kHz	
Overtone Order	OT	Fundamental	—	
Load Capacitance	CL	12	pF	
Frequency Stability	f_{tol}	± 50	$\times 10^{-6}$	25°C $\pm 3^\circ\text{C}$
Motional Series Resistance	R1	Table 1	ohm	
Drive Level	DL	Table 2	μW	
Operating Temp. Range	T_{use}	-10 to +70	°C	
Storage Temp. Range	T_{stg}	-40 to +85	°C	
Frequency Temp. Characteristics	f_{tem}	± 50	$\times 10^{-6}$	Freq. deviation from the value at 25°C

* Please contact us for other specifications.

Typical Frequencies and Part Numbers

Frequency (kHz)	Part Number
3579.545	CX1255GB03579H0PESZ1
3686.400	CX1255GB03686H0PESZ1
4000.000	CX1255GB04000H0PESZ1
6000.000	CX1255GB06000H0PESZ1
8000.000	CX1255GB08000H0PESZ1
12000.000	CX1255GB12000H0PESZ1
14318.180	CX1255GB14318H0PESZ1
16000.000	CX1255GB16000H0PESZ1
16934.400	CX1255GB16934H0PESZ1
19660.800	CX1255GB19660H0PESZ1
20000.000	CX1255GB20000H0PESZ1

Table1 Motional Series Resistance

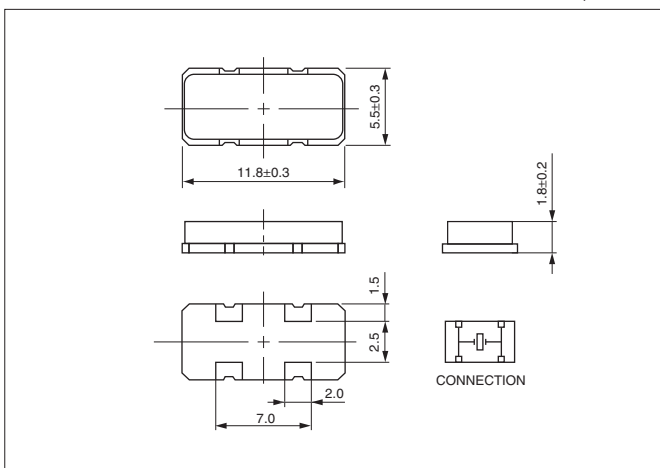
Frequency Range	Motional Series Resistance
3500 to 3999kHz	200Ω max.
4000 to 7999kHz	180Ω max.
8000 to 11999kHz	120Ω max.
12000 to 28999kHz	80Ω max.

Table2 Level of Drive

Frequency Range	Level of Drive
3500 to 15999kHz	10 μW (500 μW max.)
16000 to 24999kHz	10 μW (300 μW max.)
25000 to 28999kHz	10 μW (100 μW max.)

Dimensions

(Unit: mm)



Recommended Land Pattern

(Unit: mm)

