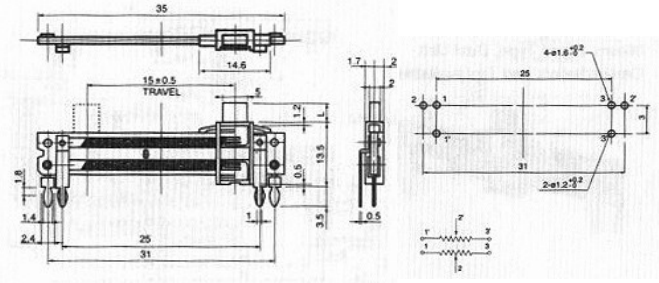
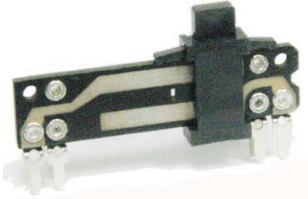


SLIDE POTENTIOMETER

Q-4505

F-1572

15mm, Stand Type, Dual Unit,
Center Detent and Tap available



SPECIFICATIONS

Electrical Characteristics

- Total Resistance 500Ω-1 MΩ
- Total Resistance Tolerance..... ±20%
- Resistance Taper..... A, B, C, D, See P109
- Sliding Noise Less than 100 mV at 20 mm/sec.
- Insulation Resistance More than 10 MΩ at DC 250V
- Withstand Voltage 1 minute at AC 250 V
- Residual Resistance.....Term. 1 ~2 : Less than 10 Ω
Term . 2 ~3 : Less than 10Ω
- Gang Error (Dual Unit) -40 dB ~ 0 dB± 3 dB
- Rated Voltage
Linear Taper B 10 mm, 15mm : AC 100V
20 mm, 25mm : AC 200V 30 mm: AC 250V
- OtherTapers 10 mm, 15mm : AC 50V
20 mm, 25mm : AC 150V 30 mm: AC 200V
- Rated Power (Single Unit/Dual Unit)
Linear Taper B 10 mm, 15mm : 0.05 W / 0.025 W
20 mm, 25mm : 0.1 W/0.05 W
30 mm:0.2W/0.1 W
- OtherTapers..... 10 mm, 15mm : 0.025 W/0.012 W
20 mm, 25mm : 0.05 W / 0.025 W
30 mm :0.1 W / 0.05 W

Mechanical Characteristics

- Operating Force 5 gt.cm - 200 gt.cm
- Center Detent Force 10 gt.cm -400 gt.cm
- Stopper Strength..... 3.0 Kgf/cm Min
(from the base level to a point of 2 mm)
- Level Wobble 2(2xL) /20 mm Max.
(L: Level length both sides)
- Level Push-Pull Strength..... 3.0 Kgf Min. at 5 sec.
- Rotational Life..... 10,000 Cycles

Durability