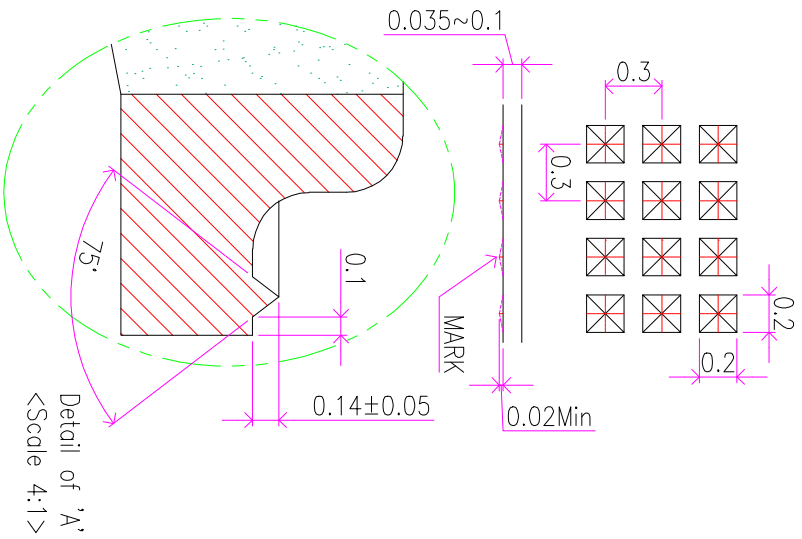
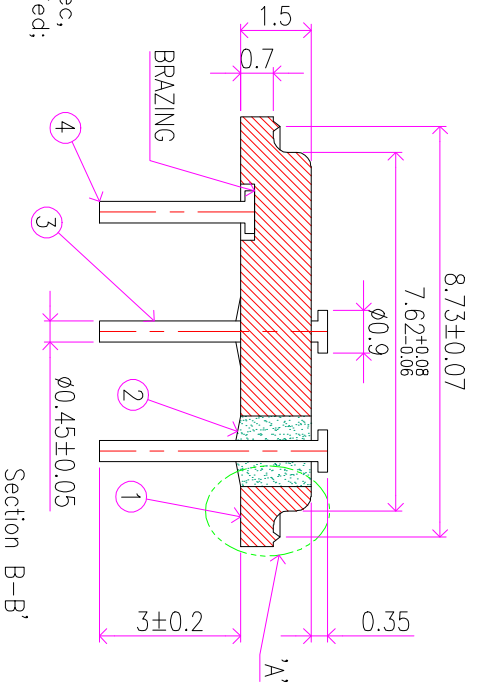
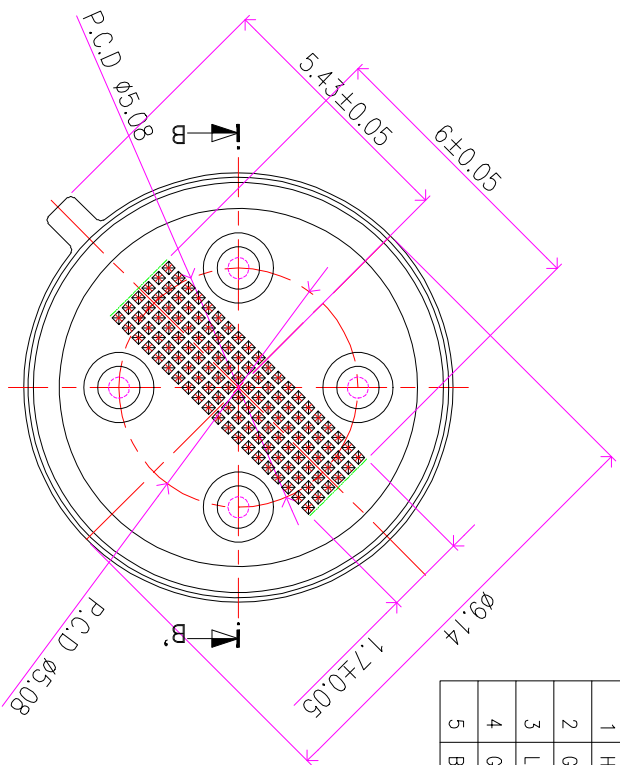


ITEM	DESCRIPTION	MATERIAL	QTY	SIZE	PART DRAWN NO	WT(kg)
1	HEADER	SPCC	1	-	JD-MH-026	-
2	GLASS	HARD	3	-	JD-MG-041	-
3	LEAD	KOVAR	3	-	JD-ML-074	-
4	GND LEAD	KOVAR	1	-	JD-ML-073	-
5	BRAZED	Bag-8	1	-	JD-MG-007-3	-



- NOTE**
1. Insulation level : AC500V 1Sec, Not electrified;
 2. Leak : $\leq 1 \times 10^{-8}$ atm.cc/sec;
 3. Insulation resistance : Between header and lead DC200V $> 10G\Omega$;
 4. Lead soldering level : > 3.0 Kg.
 5. Ni-ELP 3~5 μ m + Au PLATING 0.03 μ m Min.

Designed by	Checked by	Approved	Reference	Date	Scale	Sheet
		JD-B-105-1Au		2015.07	-	-
			Project Title			
			TO-39-1 3P4L OUTER 3.0			
Drawing No.			GEC-T039-105			

Mark	Revision	Date	Drawn	Check	Appr	Note
Ⓒ						
Ⓑ						
Ⓐ						