



## DESCRIPTION

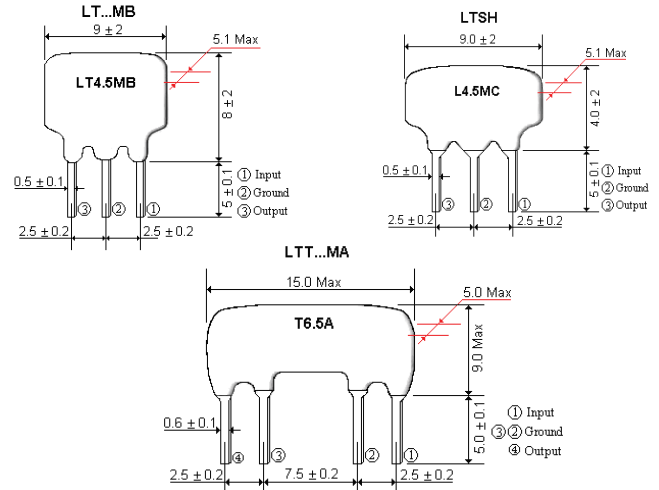
**LT...MB Series** are a high selectivity filter for 2 channel multi-sound TV. Features with frequency adjustment-free, high performance and durability, and high selectivity.

**LTS MCB/ MDB Low Spurious Series** use thickness shear vibration mode. Features with excellent spurious characteristics within Video Signal Band, and 3 types bandwidths prepared to respond customer requests. LTS MCB/ MDB is suitable for Multiplex Sound TV in America.

**High-Selectivity LTT Series** is 4 element devices that offer more selectivity than the conventional LT series (Murata SFE). The improved spurious suppression of these filters eliminates the need for cascading multiple filtering devices; therefore, it is possible to design a more compact circuit board configuration.



## MECHANICAL DIMENSIONS (all in mm)



## ELECTRICAL SPECIFICATION (TV/VCR) LT...MB) - Table 1

Part Number	Center Frequency (fn) MHz	3dB Bandwidth in kHz Min.	20dB Bandwidth in kHz Max.	Insertion Loss in dB Max.	Esperious Attenuation in dB Min.
LT4.5MB	4.5	fn ± 60	530	6	20(4.5 + 0.8MHz) 20(4.5 - 1.0MHz)
LT5.5MB	5.5	fn ± 75	550	6	25(5.5 ± 1.0MHz)
LT6.0MB	6.0	fn ± 80	600	6	25(6.0 ± 1.0MHz)
LT6.5MB	6.5	fn ± 80	630	6	25(6.5 + 1.0MHz) 30(6.5 - 1.0MHz)

## ELECTRICAL SPECIFICATION (Low Esperious in Picture Band Type) LTSH - Table 2

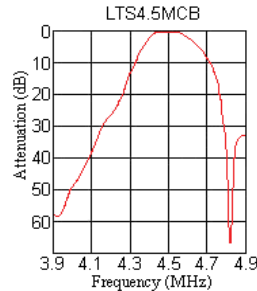
Part Number	Center Frequency (fn) MHz	3dB Bandwidth in kHz Min.	20dB Bandwidth in kHz Max.	Insertion Loss in dB Max.	Esperious Attenuation in dB Min.
LTSH4.5MCB	4.5	fn ± 60	600	6	30(0-fn)
LTSH5.5MCB	5.5	fn ± 60	600	6	30(0-fn)
LTSH6.0MCB	6.0	fn ± 60	600	6	30(0-fn)
LTSH6.5MCB	6.5	fn ± 70	650	6	30(0-fn)
LTSH4.5MDB	4.5	fn ± 70	750	6	30(0-fn)
LTSH5.5MDB	5.5	fn ± 80	750	6	30(0-fn)
LTSH6.0MDB	6.0	fn ± 80	750	6	30(0-fn)
LTSH6.5MDB	6.5	fn ± 80	800	6	30(0-fn)

## ELECTRICAL SPECIFICATION (High-Selectivity Series for TV/VCR stage) LTT - Table 3

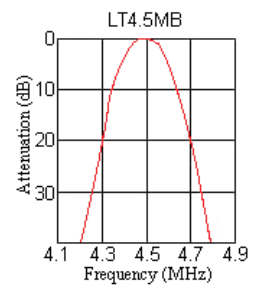
Part Number	Center Frequency (fn) MHz	3dB Bandwidth in kHz Min.	20dB Bandwidth in kHz Max.	Insertion Loss in dB Max.	Esperious Attenuation in dB
LTT5.5MA	5.5	fn + 50	350	9	50(5.5 + 1.0MHz)
LTT5.74MA	5.74	fn + 50	350	9	50(5.74 + 1.0MHz)
LTT6.0MA	6.0	fn + 50	400	9	50(6.0 + 1.0MHz)

## SERIES CHARACTERISTICS

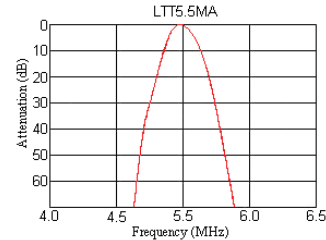
LTS MCB/ MDB Series Characteristics



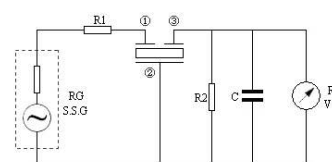
LT...MB Series Characteristics



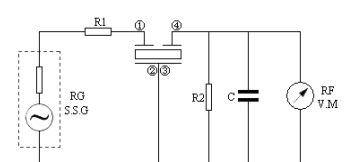
LTT MA Series Characteristics



## TEST CIRCUIT LT...MB e LTSH



## TEST CIRCUIT LTT...MA



$R_g + R_1 = R_2 = 330 \text{ Ohms}$      $C = 10 \text{ pF}$

Including stray capacitance and input capacitance of RF voltmeter

\* Operating Temperature Range: 0°C to 60°C (Standard)  
\* Specific Operating Temperature Range under request.

## PART NUMBERING SYSTEM (Example)

LT4.5MB-4.5-XX

Hold Type  
See Table 1,2,3

Options (can be blank)  
S= Standard  
X=Additional Specifications

Center Frequency  
Color Code  
See Table 1,2,3