

TECHNICAL SPECIFICATION

Model: AG9

Chemical System: Alkaline button cell

Model No. : LR936 (LR45 AG9 194)

Nominal Dimensions : φ 9.50×3.60mm

Nominal Voltage: 1.50V

Average Weight: 0.88g

Applications : Watch, calculator, electronic toy, etc.

Shelf Life : Not less than 90% of the service capacity,

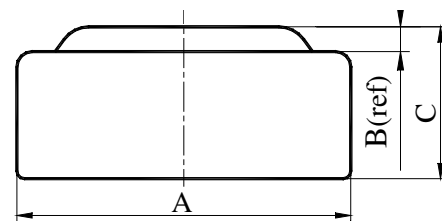
Following 1st year storage at 20°C.

Discharge Resistance : 1000Ω (20°C)

Cut-off Voltage : 0.90V

Nominal Capacity : 56mAh

- Cause for use** :
1. There are risks of electrolyte leakage or causing damage to the device if the battery is charged;
 2. The battery shall be installed with “+” and “_” in correct position;
 3. Short-circuiting and heating the battery, disposing of the can must not be permitted.



| Dimensions | Unit: mm |
|------------|--------------|
| A | 5.70----5.80 |
| B | 0.15(ref) |
| C | 1.95----2.15 |

Typical Discharge Characteristics (20°C)

