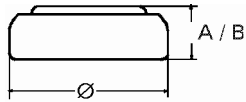


Data Sheet

Type Number 20394
Designation IEC SR 45
System Silver oxide / Zinc /
 NaOH - Electrolyte



Nominal Voltage 1,55 V
Typical Capacity C 56 mAh
 Load 13 kOhm, at 20°C down to 1.2 V

Weight (approx.) 1,04 g
Volume 0,24 ccm
Coding..... Date of Manufacturing
 Month/Year

Temperature Ranges

	min	max.
Storage	-10°C	65°C
Discharge	-10°C	65°C

Dimensions

	min	max.
Diameter (Ø)	9,5	9,3
Height (A/B)	3,3	3,6

Segment Watch

Main Applications Watch
 Photo
 Electronic

Typical Capacities (at 20°C)

Discharge Type	Load	End Voltage:	1.2 V
Continuous	13000 Ω	Time:	500 h
24h/d,7d/w		Capacity [mAh]:	56
Current [µA]:	120	Energy [mWh]:	80