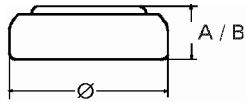


Data Sheet

Type Number 20390
Designation IEC SR54
System Silver oxide / Zinc /
 NaOH - Electrolyte



Nominal Voltage 1,55 V
Typical Capacity C 80 mAh
 Load 5.6 kOhm, at 20°C down to 1.2 V

Weight (approx.) 1,32 g
Volume 0,28 ccm
Coding..... Date of Manufacturing
 Month/Year

Temperature Ranges

| | | |
|-----------------|-------|------|
| | min | max. |
| Storage | -10°C | 65°C |
| Discharge | -10°C | 65°C |

Dimensions

| | | |
|--------------------|-------|-------|
| | min | max. |
| Diameter (Ø) | 11,25 | 11,60 |
| Height (A/B) | 2,75 | 3,05 |

Segment Watch

Main Applications Watch
 Photo
 Electronic

Typical Capacities (at 20°C)

| Discharge Type | Load | End Voltage: 1.2 V | |
|---|--------|--------------------|-----------------|
| | | Time: | Capacity [mAh]: |
| Continuous 24h/d,7d/w Current [µA]: | 5600 Ω | 290 h | 80 |
| | 275 | 123 | 123 |