

Automotive Relay	TRV6
-------------------------	-------------

- 80A continuous rating 85°C
- 1A,1B&1C arrangements
- Plug-in or PC board terminals
- Optional mounting bracket



28×28×23.7

■ ORDERING CODE

TRV6 — 12VDC (D1) — 1Z — F — P1
 1 2 3 4 5 6

- | | |
|---|---|
| <p>1. Relay Model</p> <p>2. Coil Nominal Voltage
6,12,24VDC</p> <p>3. None: Standard
R1: Coil parallel with 1/2W resistor 680 Ω for
Coil voltage 12VDC; 2700 Ω for coil voltage 24VDC
D1: Coil parallel with diode IN4007 the positive
pole “+”on #85 terminal
D2: Coil parallel with diode IN4007 the positive
pole “-”on #85 terminal</p> | <p>4. Contact Form
1Z: Form 1C
1H: Form 1A
1D: Form 1B</p> <p>5. F: WITH BRACKET
None: WITHOUT BRACKET</p> <p>6. P1: PCB Type 5.3mm
P2: PCB Type 3.2mm
None: B Type</p> |
|---|---|

■ COIL DATA

Nominal Voltage (VDC)	6	12	24	1.8W
Coil Resistance (Ω)	20	80	320	
Rated Current (mA)	300	150	75	
Max Operate Voltage (VDC)	3.9	7.8	15.6	
Min Release Voltage (VDC)	0.6	1.2	2.4	
Max Applicable Voltage	130% at 70°C, 170% at 23°C			

■ CONTACT DATA

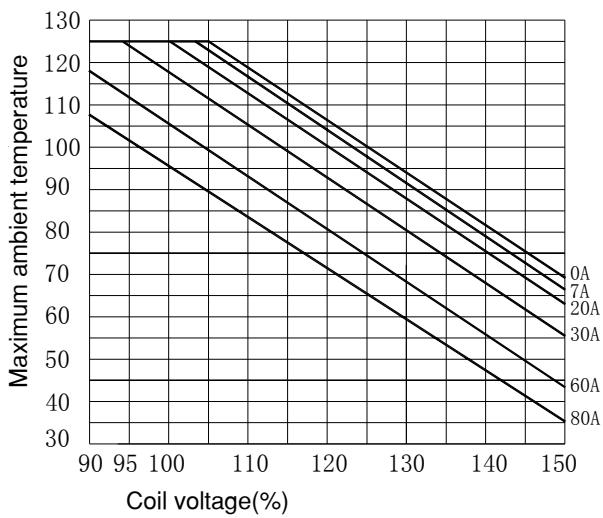
Contact Form	1H/1D/1Z
Contact Material	Silver Alloy
Load	Resistive load(COS Φ 1)
Contact Ratings	NO: 50A 14VDC NC: 40A 14VDC
	NO: 80A 14VDC NC: 60A 14VDC
Minimum load	0.5A 12VDC
Max Switching Voltage	75VDC
Max Switching Current	80A
Max Switching Power	980W
Contact Resistance	100m Ω Max at 6VDC 1A
Life Expectancy	Electrical: 100, 000 Operations(at30Operations/minute)
	Mechanical: 10, 000, 000 Operations(at300Operations/minute)

■ CENTACT DATA

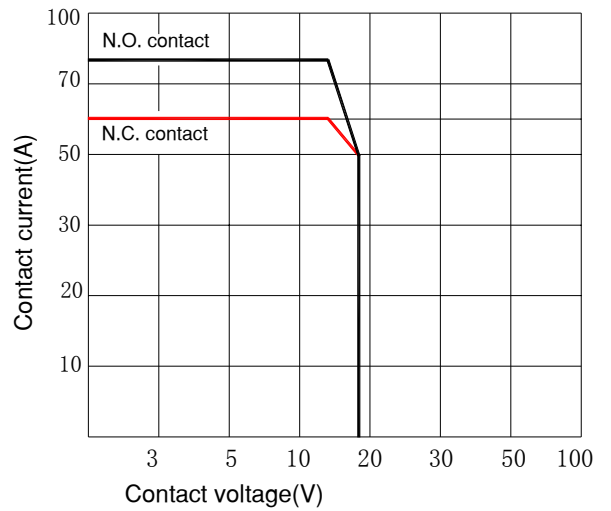
Insulation Resistance	100M Ω Min at 500VDC
Dielectric Strength Between Open Contacts	500VAC(for one minute)
Between Contacts and coil	500VAC(for one minute)
Operate Time	7ms
Release Time	5ms
Temperature Range	-40°C to +85°C
Shock Resistance	Operating Extremes: 20G
	Damage Limits: 100G
Vibration Resistance	10-55Hz, 1.5mm
Max. switching frequency	Mechanical: 18,000 operations/hr
	Electrical: 1,800 operations/hr
Humidity	40-85%
Weight	Approx 46g
Safety Standard	

■ ENGINEERING DATA

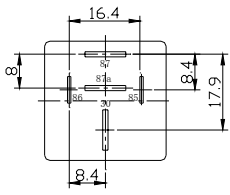
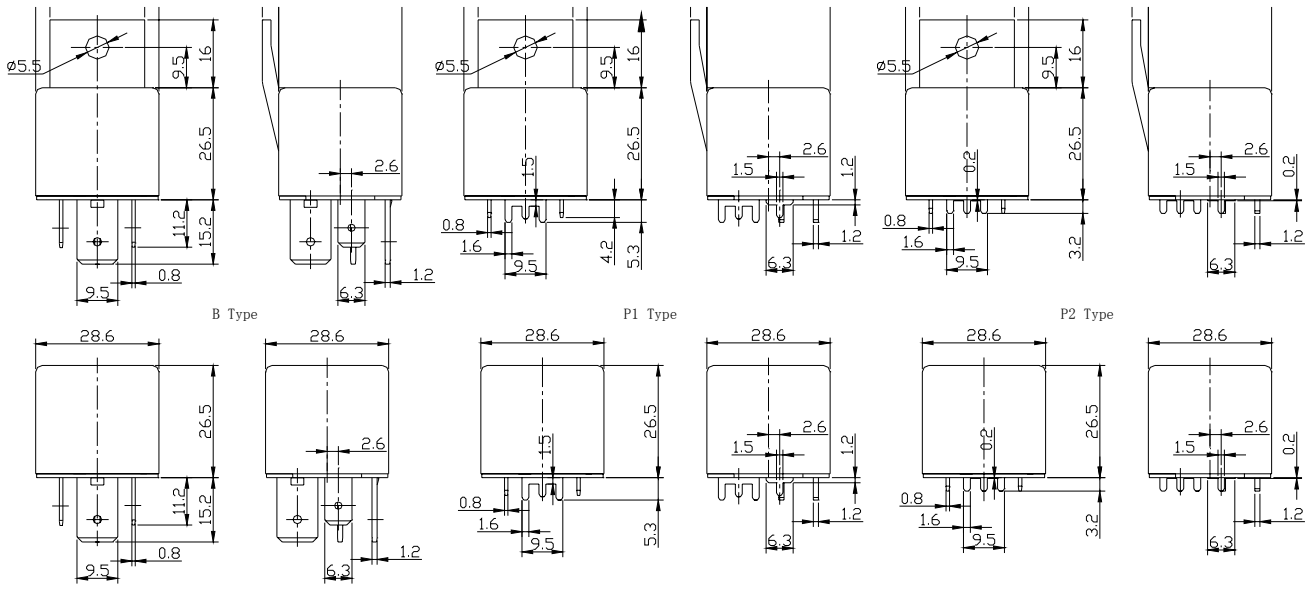
Ambient Temperature



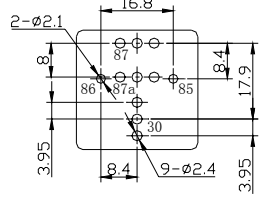
Contact switching capacity



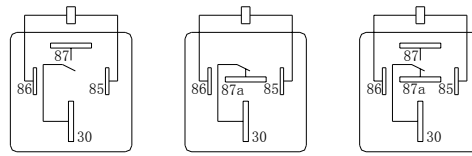
OVERALL AND MOUNTING DIMENSIONS



Layout (QUICK TYPE)



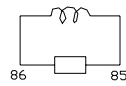
Layout (PCB TYPE)



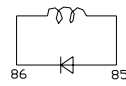
1A

1B

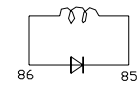
1C



R1



D1



D2