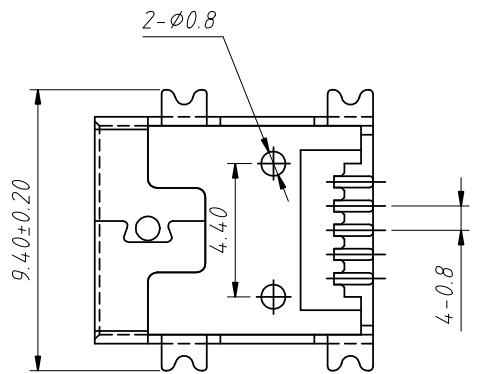


RECOMMENDED PCB LAYOUT



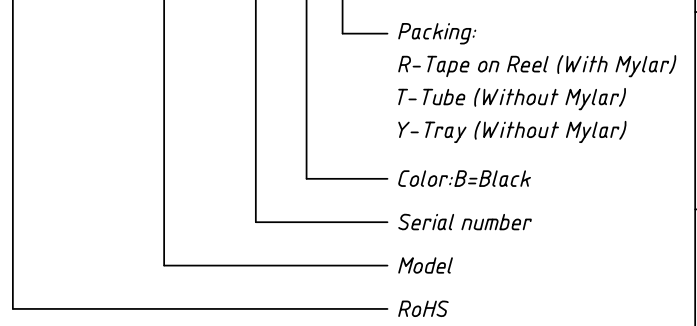
Material
 Housing: High Temperature Thermoplastic,
 UL 94 V-0 LCP, Black.
 Contact: Copper Alloy C2680.
 Shell: Copper Alloy C2680.

Finish:
 Contact: Plated Gold In Mating Area; Tin On Solder Talls.
 Shell: Nickel Plating.

Electrical:
 Current Rating: 1.0A/Contact Terminal.
 Voltage Rating: 30V DC
 Contact Resistance: 50mΩ Max.
 Dielectric Withstanding Voltage: 300 V AC AT Sea Level.
 Insulation Resistance: 100MΩ Min.
 Connector Mate and Unmated Force
 Mate Force: 3.0kgf Max.
 Unmated Force: 0.7kgf Min.
 Terminal Retention: 0.5kgf Min.

Order Information

L-KLS1- 229 - 5FB-B-R



GENERAL TOLERANCE	PROJECTION		Description:
X. ±0.30	UNITS	mm	CONN MINI USB RCPT, TYPE B SMD
.X ±0.25	SCALE	1:1	
.XX ±0.20	Draw by:	Jenny	KLS P/N: L-KLS1-229-5FB-B-R
ANGLE TOLERANCE	Check by:		NingBo KLS ELECTRONIC CO.,L TD.
X. ±3°	Date	2018-03-01	
.X ±2°	SHEET	1 OF 1	
.XX ±1°			