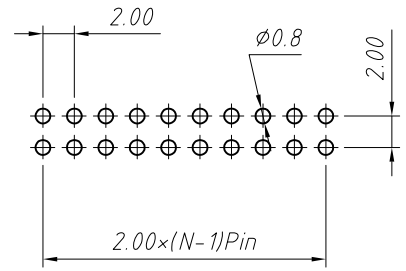
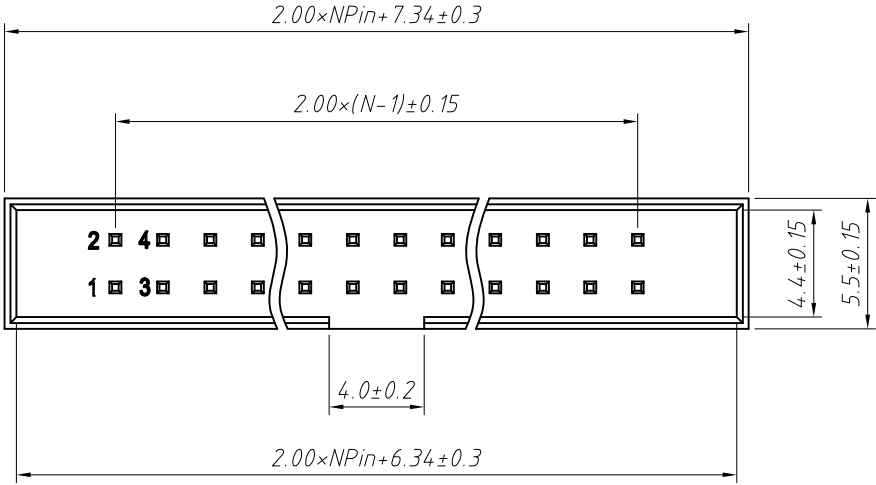


1  
RoHS Compliance

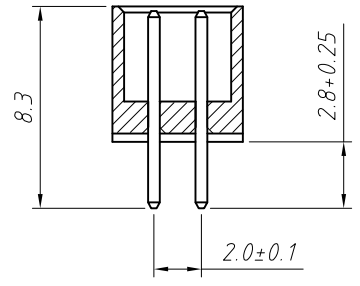
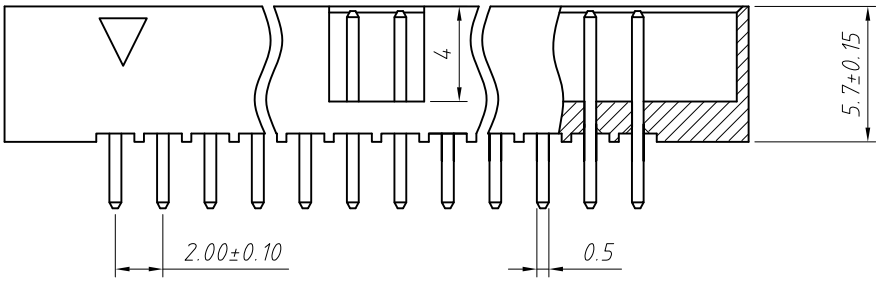


Material:  
Housing: PA6T, UL94V-0  
Contact: Brass  
Plating: Gold plated

Electrical Characteristics:  
Rated Current: 1.5AMP  
Contact Resistance: 20mΩ Max  
Withstand Voltage: 400V AC/DC  
Insulator Resistance: 800MΩ Min

Recommended P.C.B Layout (Top Side)  
(PCB BOARD TOLERANCE ±0.05)

Mechanical  
Operating Temperature: -40°C ~ +105°C  
Max. Processing Temp: 230°C for 30-60 seconds (260°C for 10 seconds)



Order Information:  
L-KLS1-202B-XX-S-B-□  
L: RoHS  
Box Header Series  
202B: 2.00mm Pitch  
XX-No. of 06 ~ 64 pin  
Type: S-Straight pin  
R-Right Angle Pin T-SMT  
Color: B-Black G-Gray  
Material: NONE=PA6T  
A=PBT C=LCP

|                   |            |                                   |                      |
|-------------------|------------|-----------------------------------|----------------------|
| ANGLE TOLERANCE   | PROJECTION | Description:                      |                      |
| ±3°               |            | 2.00mm Pitch Box Header Connector |                      |
| GENERAL TOLERANCE | UNITS      | mm                                | KLS P/N:             |
| x.x ±0.30         | SHEET SIZE | A4                                | L-KLS1-202B-XX-S-B-□ |
| x.xx ±0.20        | Draw:      | Daniel                            | 2018-07-10           |
| x.xxx ±0.10       | Check:     | Daniel                            | 2018-07-10           |

