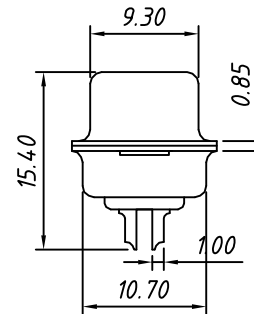
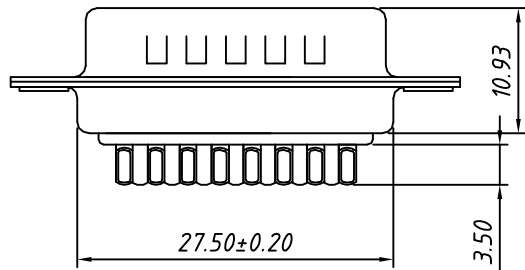
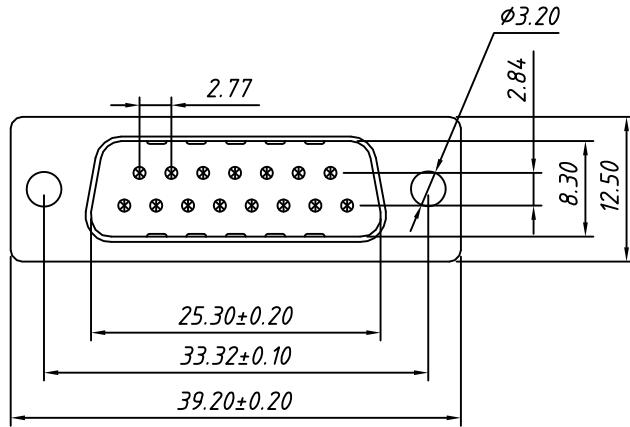


RoHS Compliant



**Material:**  
Housing: PBT+30% Glass filled ,UL94V-0  
Contacts: Brass ,  
Gold Plating on Contact Arer,  
Tin on Solder Tail.  
**Shell: Steel,**  
Front Shell Nickel Plating,  
Back Shell Tin Plating

**Electrical Characteristics:**  
Current Rating: 5 AMP  
Insulator Resistance: 1000MΩ Min. at DC 500V  
Withstanding Voltage: 500V AC (rms) for 1 minute  
Contact Resistance: 20mΩ Max. Initial  
Operating Temperature: -55°C ~ +105°C

**Order Information**

L - KLS1 - 213 - 15 - M - L  
RoHS \_\_\_\_\_  
D-SUB Connector, \_\_\_\_\_  
2 Row Solder type, Simple Terminal  
Number of Contacts \_\_\_\_\_  
Connector type: M-Male \_\_\_\_\_  
Housing Color: \_\_\_\_\_  
B-Black L-Blue W-White

<b>GENERAL TOLERANCE</b>	<b>PROJECTION</b>		<b>Description:</b>
X. ±0.30	UNITS	mm	D-SUB Connector, 15Pin Solder Type, Male, Simple Terminal
.X ±0.25	SCALE	1:1	
.XX ±0.20	Draw by:	Daniel	KLS P/N: L-KLS1-213-15-M-L
<b>ANGLE TOLERANCE</b>	Check by:	Daniel	NingBo KLS ELECTRONIC CO.,L TD.
X. ±3°	Date	2018-03-01	
.X ±2°	SHEET	1 OF 1	
.XX ±1°			