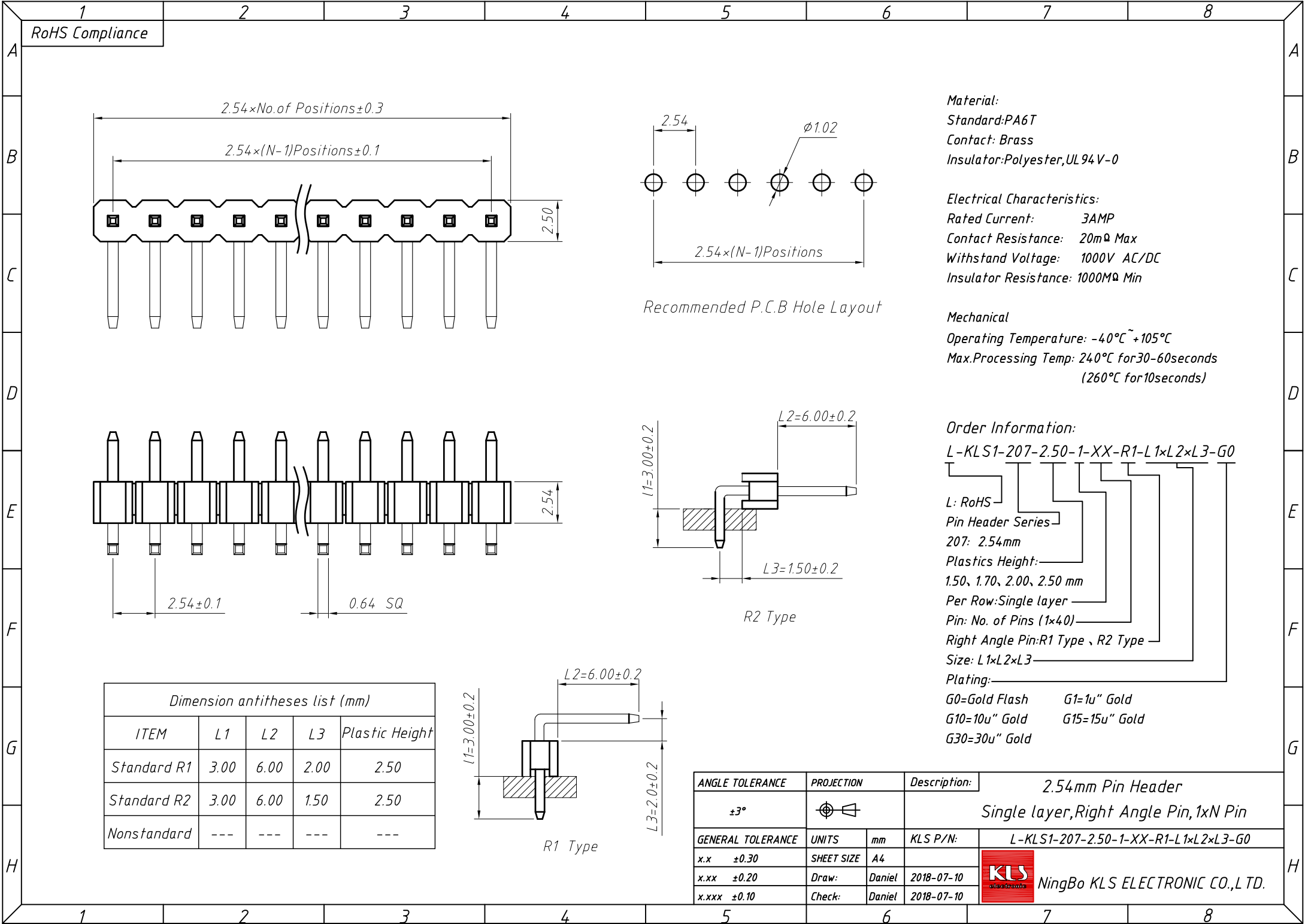


1
RoHS Compliance



Material:
Standard:PA6T
Contact: Brass
Insulator:Polyester,UL94V-0

Electrical Characteristics:
Rated Current: 3AMP
Contact Resistance: 20mΩ Max
Withstand Voltage: 1000V AC/DC
Insulator Resistance: 1000MΩ Min

Mechanical
Operating Temperature: -40°C~+105°C
Max.Processing Temp: 240°C for30-60seconds
 (260°C for10seconds)

Order Information:
 L-KLS1-207-2.50-1-XX-R1-L1xL2xL3-G0

L: RoHS
 Pin Header Series
 207: 2.54mm
 Plastics Height:
 1.50, 1.70, 2.00, 2.50 mm
 Per Row:Single layer
 Pin: No. of Pins (1x40)
 Right Angle Pin:R1 Type、R2 Type
 Size: L1xL2xL3
 Plating:
 G0=Gold Flash G1=1u" Gold
 G10=10u" Gold G15=15u" Gold
 G30=30u" Gold

Dimension antitheses list (mm)				
ITEM	L1	L2	L3	Plastic Height
Standard R1	3.00	6.00	2.00	2.50
Standard R2	3.00	6.00	1.50	2.50
Nonstandard	---	---	---	---

ANGLE TOLERANCE	PROJECTION	Description:	2.54mm Pin Header	
±3°		Single layer,Right Angle Pin,1xN Pin		
GENERAL TOLERANCE	UNITS	mm	KLS P/N:	L-KLS1-207-2.50-1-XX-R1-L1xL2xL3-G0
x.x ±0.30	SHEET SIZE	A4		
x.xx ±0.20	Draw:	Daniel	2018-07-10	
x.xxx ±0.10	Check:	Daniel	2018-07-10	

NingBo KLS ELECTRONIC CO.,L TD.